



# NEW FACILITY PREPAREDNESS EVALUATION

*ONCORE, INC*





*In new healthcare facilities, it is important to ensure a healthy and safe patient care environment from day one. Throughout our 30 years of experience, Oncore has developed a comprehensive New Facility Preparedness Evaluation to aid in a safe transition from construction to occupation.*



As part of this evaluation we offer the following services:

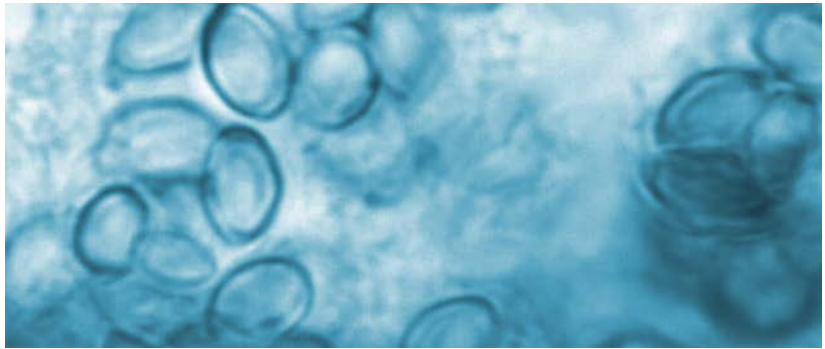
- Particulate Monitoring
- Monitoring for Fungal Elements
- Exterior Entrance Pressure Evaluation
- Interior Pressure Evaluation
- Air Exchange Confirmation
- Exposure Monitoring
- Ductwork and HVAC inspection
- Legionella Assessment



## Particulate Monitoring

Monitoring of particulates confirms that HVAC system is functioning properly prior to and during occupation and that areas have been thoroughly cleaned post-construction and continue to remain clean shortly after after occupation.

This service involves performing particulate monitoring in the breathing zones and at diffusers throughout all ORs, Procedure Rooms, Sterile Processing Areas, Clean/Soiled Utility Rooms, as well as other representative areas on each floor of the building.



## Monitoring for Fungal Elements

Spore trap air sampling should be performed to confirm that fungal elements are not currently present in excess prior to and after occupation.

This should be performed throughout all ORs, Procedure Rooms, Sterile Processing Areas, Clean/Soiled Utility Rooms, as well as other representative areas on each floor of the building.

## Interior Pressure Evaluation

Throughout healthcare facilities, certain rooms are required to be under positive or negative pressure. This evaluation will ensure these requirements are being met and that the HVAC system is functioning properly both before and after occupation.

Pressurization will be checked in all ORs, procedure rooms, SPD areas, clean and soiled utility rooms, and any other rooms that are required to maintain a given pressurization in order to ensure that they are under proper pressurization.



## Air Exchange Confirmation

Air exchange requirements must be met in certain areas of a healthcare facility. This service ensures that these requirements are being met prior to occupation.

Air exchanges will be confirmed in areas where this is a requirement, including ORs, Procedure Rooms, SPD areas, and clean/soiled utility rooms.

## Exterior Entrance Pressure Evaluation

Pressure should be evaluated at all exterior entrances to ensure that the building is under proper pressurization and not drawing outdoor elements into the building both prior to and after occupation.



## Duct Work and HVAC Inspection

A visual inspection of duct work, air handlers, and other new HVAC components ensures the cleanliness of the ductwork and proper filtration of the air handlers that serve the new building prior to occupation.

Representative portions of new ductwork in the new building will be inspected. Also, the cleanliness and conditions of filters at the air handler in the new building will be inspected. Particulate counts will be gathered before and after the final filters of all air handlers.

## Exposure Monitoring

OSHA, NIOSH, and the ACGIH have set exposure limits for many chemicals commonly utilized throughout healthcare facilities that should be monitored for routinely. It is also required that they be monitored for in any instances of new construction or changes to existing construction.

Exposure monitoring will be performed throughout the new facility where these chemicals of concern are in use, including laboratory, operating room, and sterile processing areas.



## Legionella Assessment

In a new facility, the potential risk for, or presence of, legionella waterborne pathogens should be assessed. This is also important in developing a routine legionella sampling plan moving forward.

A visual inspection of the building's water supply system will be performed, as well as discussion with the contractor and facility engineering department. Measurements of pH and chlorine content of water in representative areas will be obtained, as well as legionella samples in these areas for analysis by an independent laboratory.



ONCORE, INC  
1228 E 7th Ave.  
Suite 302  
Tampa, Florida 33605  
[www.oncorerisk.com](http://www.oncorerisk.com)

